

2.2.8 Typical floor plan types

These pages illustrate the amended typical floor plans for the residential building. The flat plans are laid out with furniture zones to assist in the understanding of the proposed arrangements and critical dimensions are also indicated.

KEY:




	One Bedroom Apartment		Two Bedroom Apartment		Three Bedroom Apartment
---	-----------------------	---	-----------------------	---	-------------------------

Fig 2.36 Illustrative CGI view of the residential building looking west along Courtfield Road, identifying the arrangement of residential floor plan types across all levels

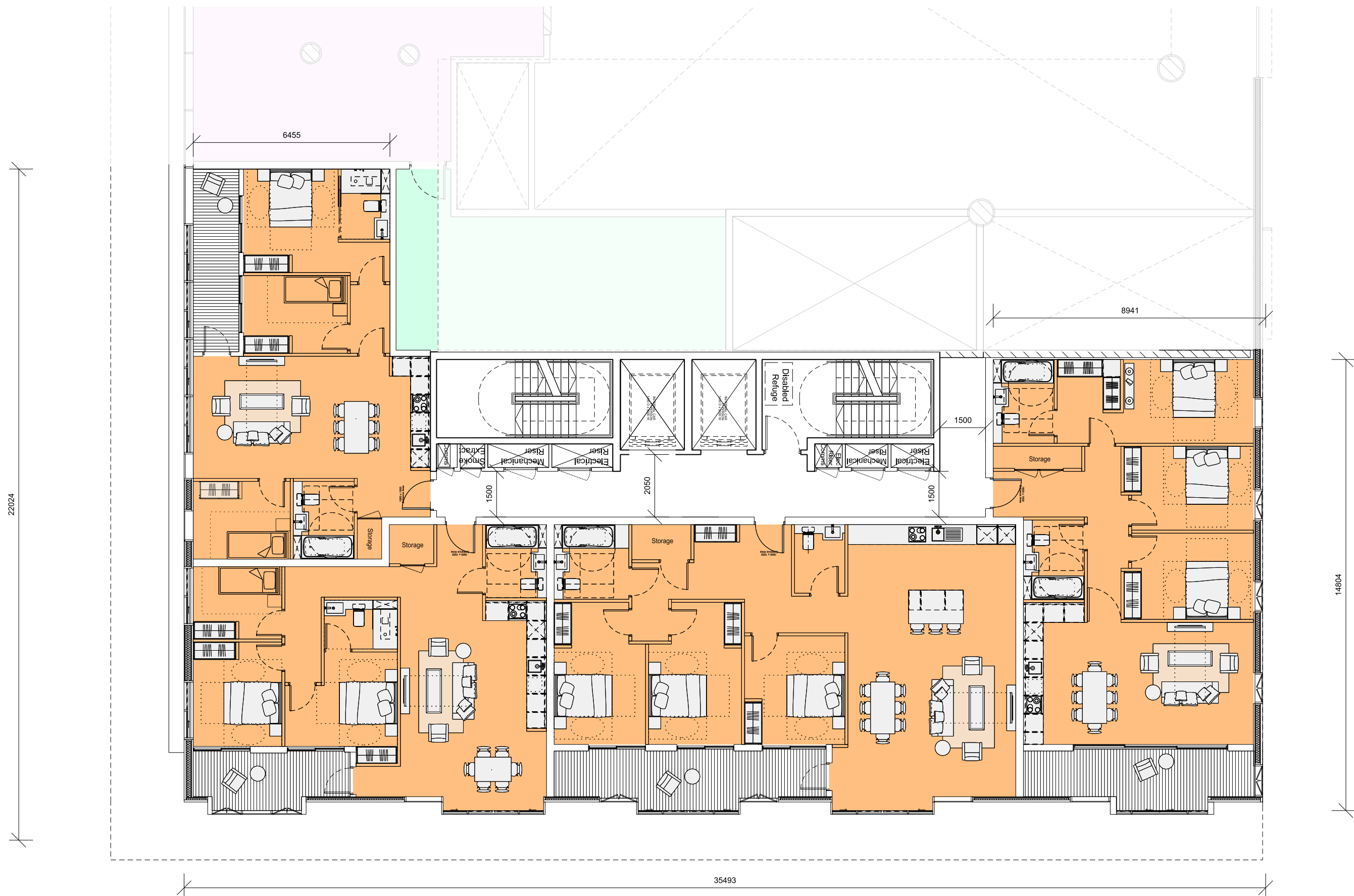


Fig 2.37 Mezzanine level floor plan of the residential component of the building



Fig 2.38 Typical plan for level 1 of the residential component of the building

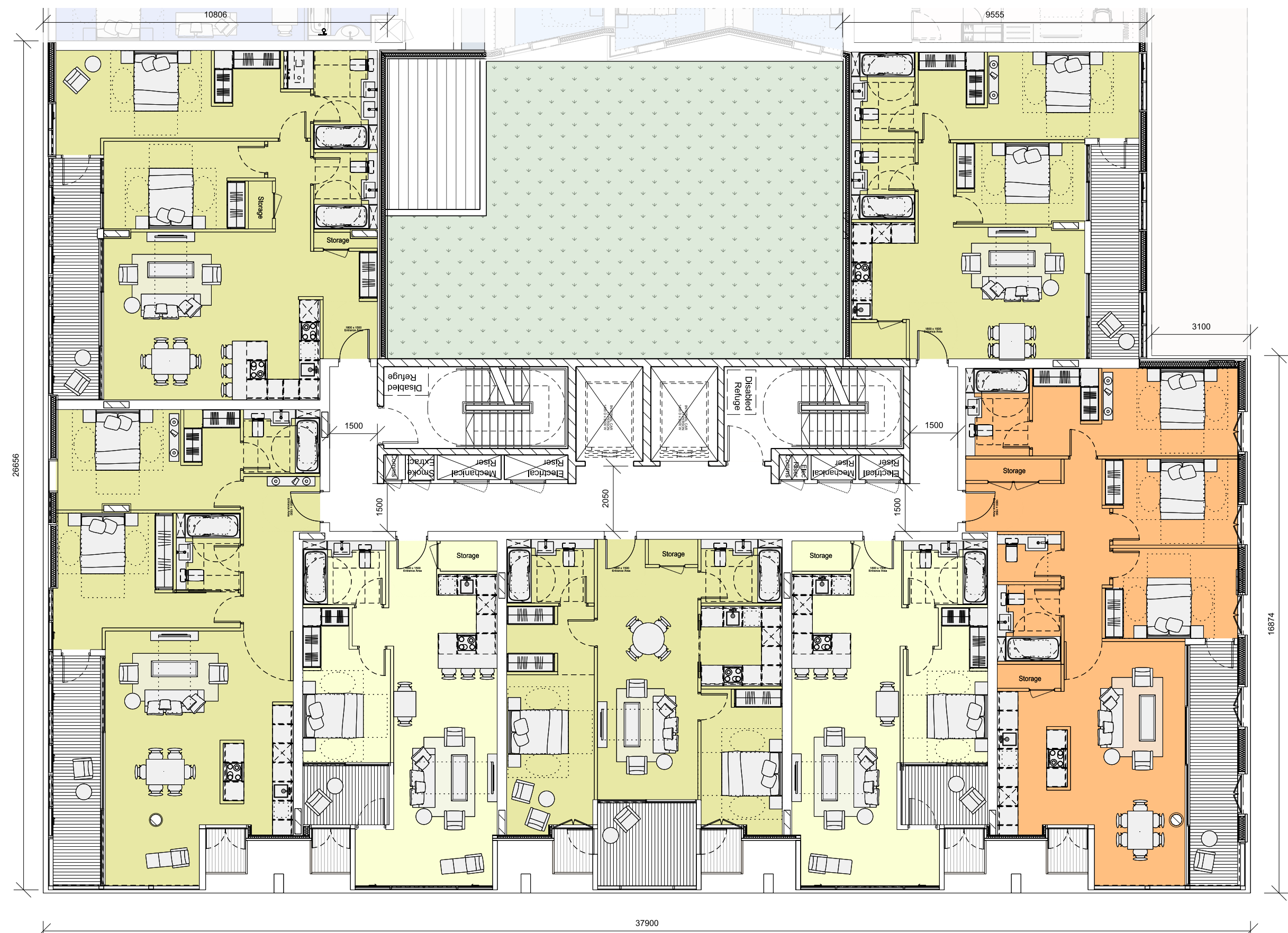


Fig 2.39 Typical plan for level 2 of the residential component of the building

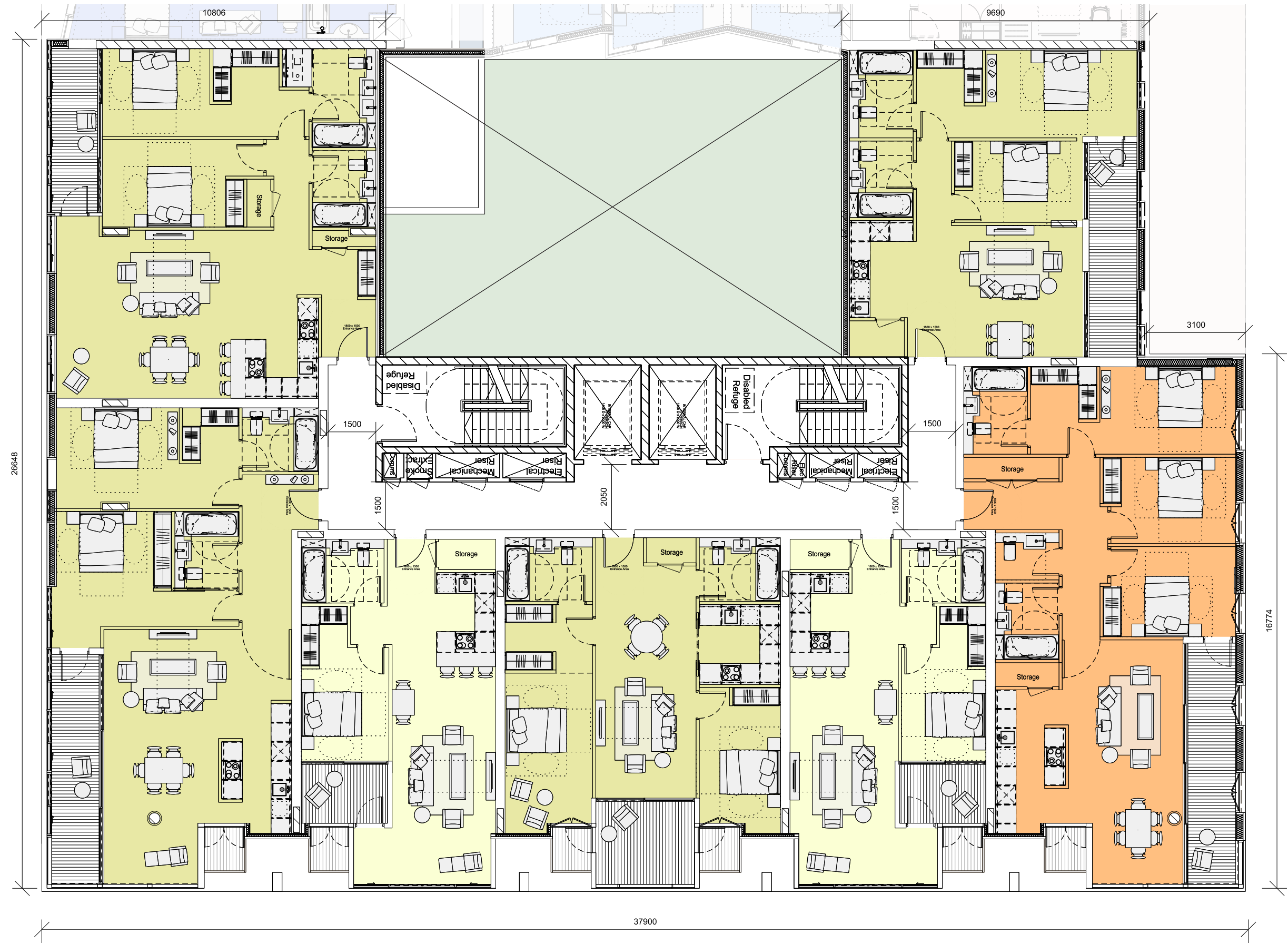


Fig 2.40 Typical plan for level 3 of the residential component of the building

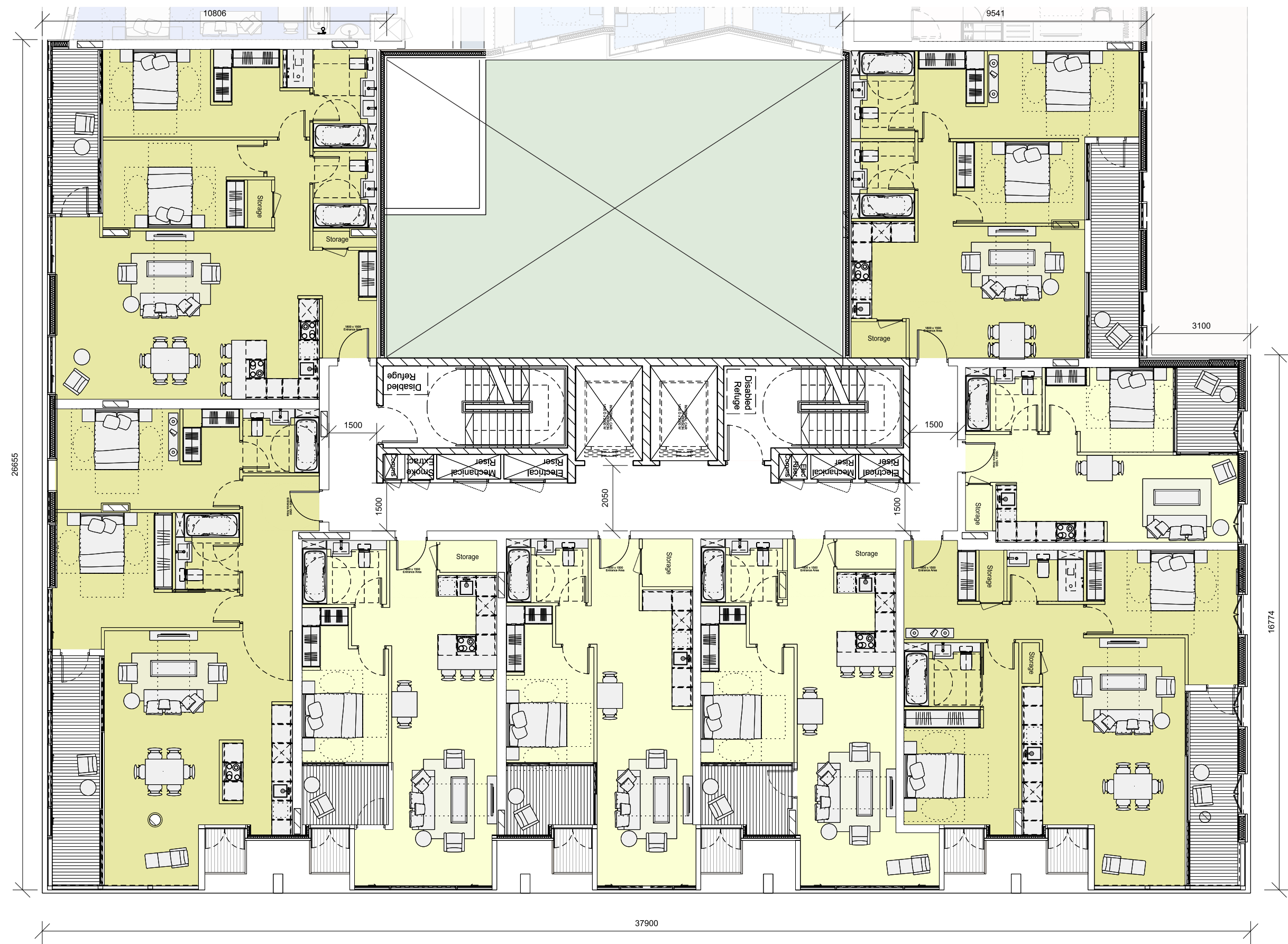


Fig 2.41 Typical plan for levels 4, 5 & 6 of the residential component of the building

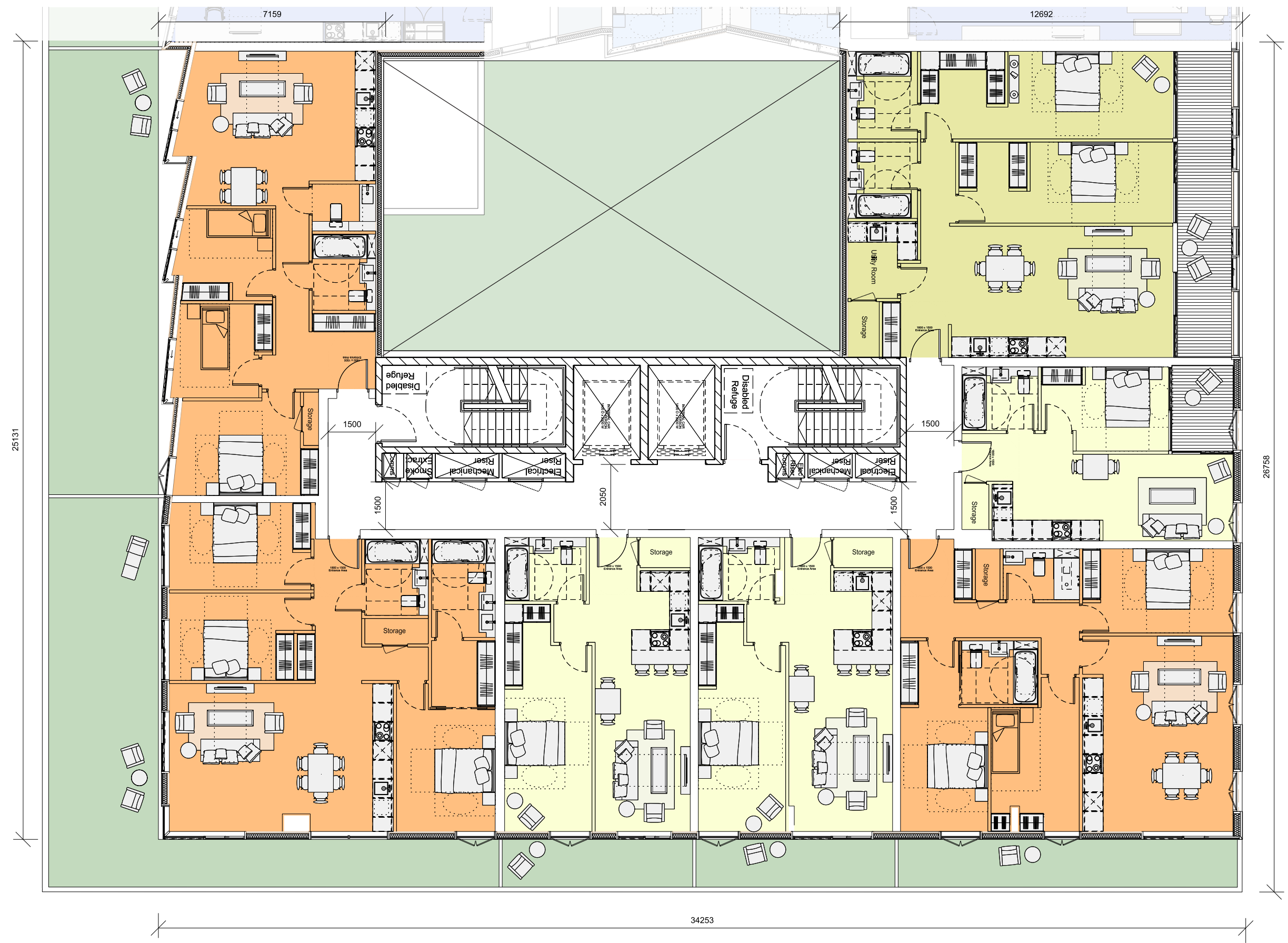


Fig 2.42 Typical plan for level 7 of the residential component of the building

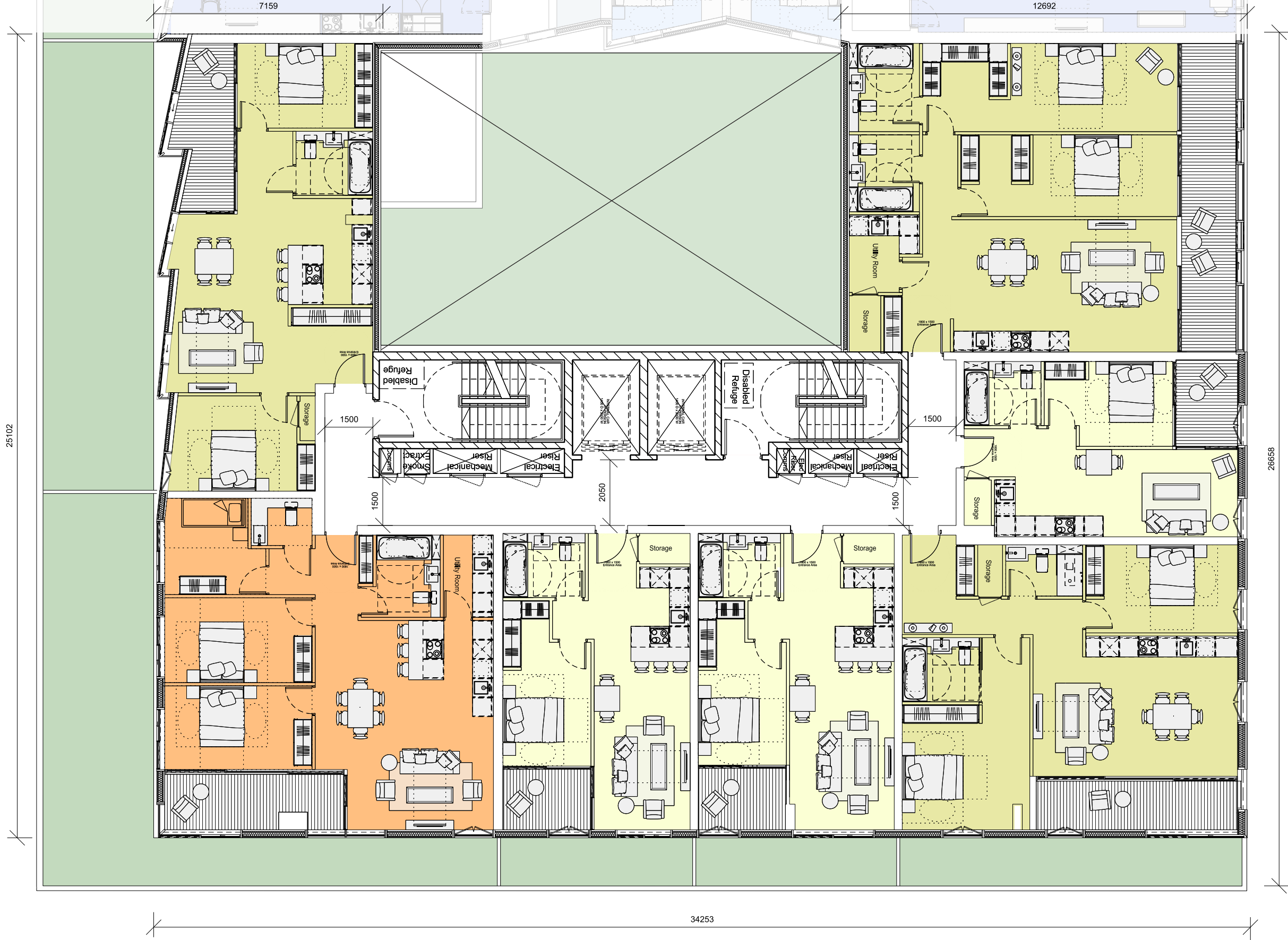


Fig 2.43 Typical plan for level 8 of the residential component of the building

2.2.9 Typical apartment plan types

These pages illustrate typical studio, 1bed, 2bed and 3bed apartment layouts within the building. The apartment types are the same as proposed in the June 2018 submission with the addition of two new plan types. They follow all the same principles as those that applied to the June submission as summarised in the original DAS.



Fig 2.44 Typical examples of studio, one bed, two bed and three bed residential apartment layouts